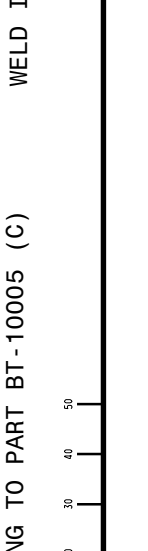
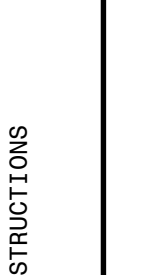
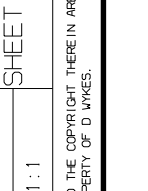
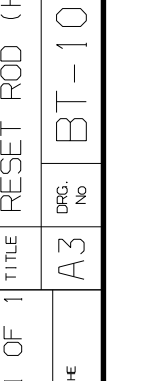
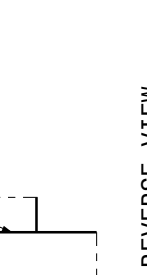
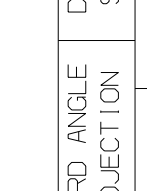
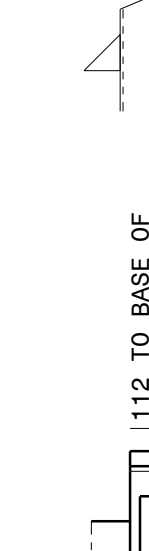
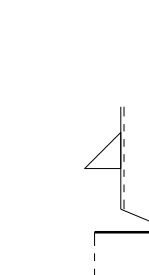
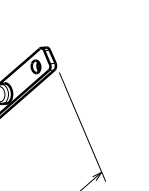
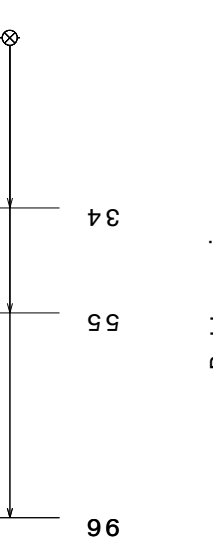
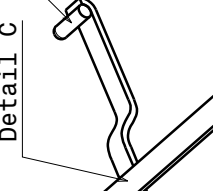
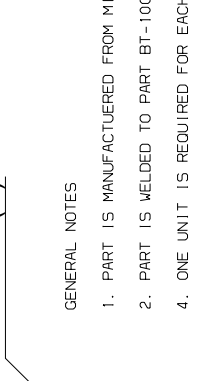
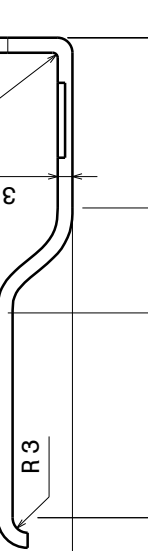
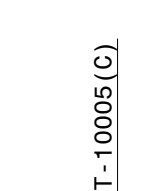
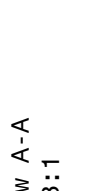
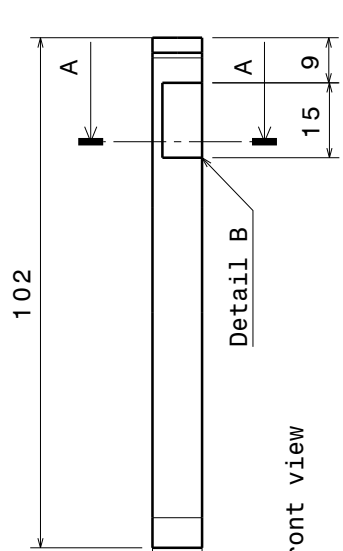
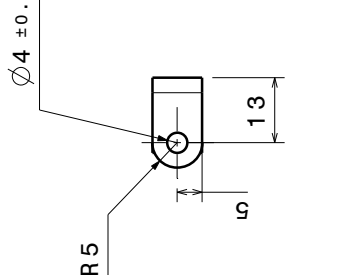
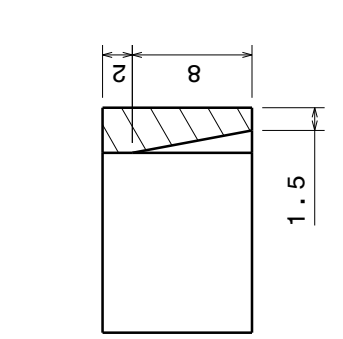
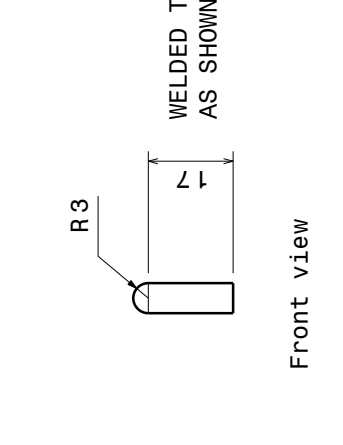


DRG. No.	BT-10005 (A)
SHEET 1 OF 1	

ISSUE	MODIFICATION	DATE
01	PROTO RELEASE	DEC 2005



WELDED TO BT-10005 (A)  
AS SHOWN

BT-10005 (A)

BT-10005 (B)

BT-10005 (C)

Detail C

112 TO BASE OF  
BT-10005 (C)

GENERAL NOTES

- PART IS MANUFACTURED FROM MILD STEEL
- PART IS WELDED TO PART BT-10005 (B)
- ONE UNIT IS REQUIRED FOR EACH TARGET MACHINED COMPONENTS
- TOLERANCES UNLESS OTHERWISE STATED:  
LINEAR DIMENSIONS 100 AND UNDER  $\pm 0.2\text{mm}$   
LINEAR DIMENSIONS OVER 100 AND UNDER 1000  $\pm 0.5\text{mm}$   
LINEAR DIMENSIONS OVER 1000  $\pm 1.0\text{mm}$   
ANGULAR DIMENSIONS  $\pm 1^{\circ}-0'$   
HOLE POSITIONS  $-0.25$
- REMOVE ALL BURRS AND SHARP EDGES

IF IN DOUBT ASK

DO NOT SCALE

THIRD ANGLE PROJECTION

DIMENSIONS IN MILLIMETRES

DRAWN D WYKES DATE DECEMBER 2005

TITLE RESET ROD (HAMMER BAR)

SHEET 1 OF 1

SCALE 1:1

THIS DOCUMENT AND THE COPYRIGHT THEREIN ARE THE PROPERTY OF D WYKES.

DRG. No. BT-10005 (A)

SHEET 1 OF 1

10 20 30 40 50